

DHI UK & IRELAND SYMPOSIUM 2017

27
JUNE


MIKE
Powered by **DHI**

Agenda

- Domestic arrangements
- Introduction
- Over to you for the main event!

Domestic Arrangements



Welcome to The Moat House

Introducing the DHI Team



Your Delegate Pack



BATHYMETRICS

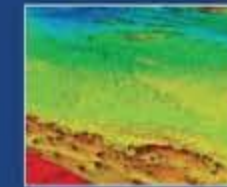
Instantly accessible global Bathymetry data

WHY BATHYMETRICS?

We help you save time and money for marine engineering and hydrographic activities with high resolution, accurate, easy to use bathymetry products for every part of the world.

KEY BENEFITS

- "Off-the-shelf" GIS-ready bathymetry for rapid delivery
- Easy integration with onshore and subsurface data sets and other data in your project
- Simplified, online ordering and delivery for rapid data deployment
- Reduces time and risk planning for marine and seismic surveys
- Mobilization or permits are not required, no international border issues
- No environmental impact on the survey site



INDUSTRY APPLICATIONS

- Coastal defence
- Environmental management
- Commercial and sport fishing
- Insurance/risk management
- Marine archaeology
- Oil & gas
- Tidal and wind energy

WHAT IS BATHYMETRICS?

TCarta Marine, a leading provider of satellite-based mapping services and data, together with DHI, the world renowned consultant group within water environments, has won the backing of the European Space Agency (ESA) to create a new off the shelf shallow water satellite derived bathymetry service. Bathymetry data is created using advanced algorithms and DigitalGlobe's WorldView-2 and WorldView-3 satellite imagery to derive the depth model of water from both salt and fresh water coastlines.

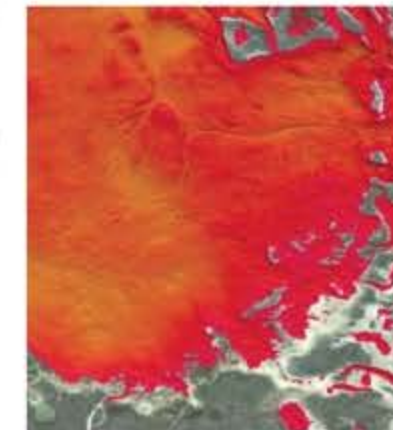
The bathymetric data has been extremely popular among government organisations, energy exploration & production companies and marine engineering firms. Unique value price points and small-area purchases are now possible because of the launch of an instant access portal, Bathymetrics. The online service will expand the base of customers to include organisations and companies working on marine projects requiring immediate turn around.

The instant access Bathymetrics portal includes TCarta Marine's global 90m Bathymetry dataset. This product is available for customers who wish to purchase lower resolution data and for areas where there is currently no 2m Satellite Bathymetry data available.

BATHYMETRICSXYZ.COM

For the first time, customers can buy readymade, instantly available, high resolution bathymetry at a fraction of the cost of traditional methods such as LIDAR or Multibeam. TCarta Marine and DHI are selling data through an online instant access portal.

The Bathymetrics portal will enable customers to search for coastal zone bathymetric data, pay by the square kilometre for just the data they need, and download it immediately into their digital mapping software.



Portal Address - www.bathymetrics.xyz

EMAIL: info@tcartamarine.com

Who are DHI?



Solutions



Software



Training



Who are DHI?

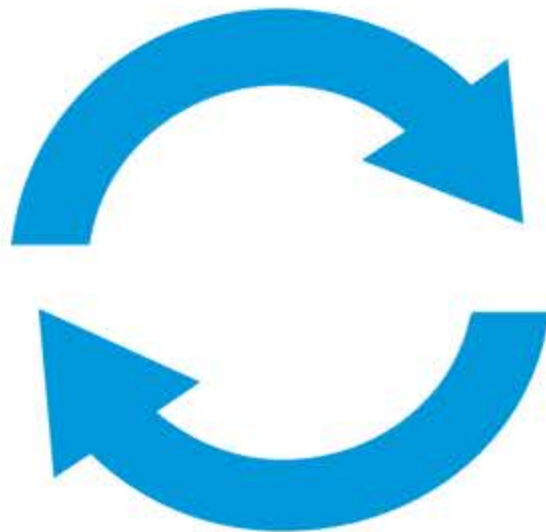
DHI is one of the inventors of computational hydraulics

Our globally renowned MIKE software represents nearly 50 years of continuous science-led development, offering the widest possible range of water modelling applications with unparalleled integration and performance



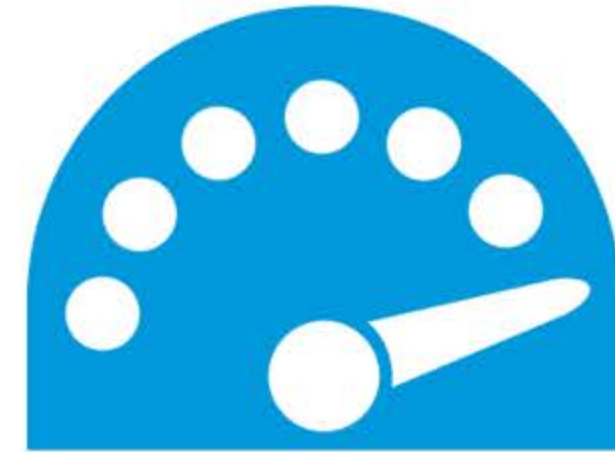
We are independent

This gives us the freedom to excel and be unbiased



We are not-for-profit

This allows us to reinvest in furthering our knowledge



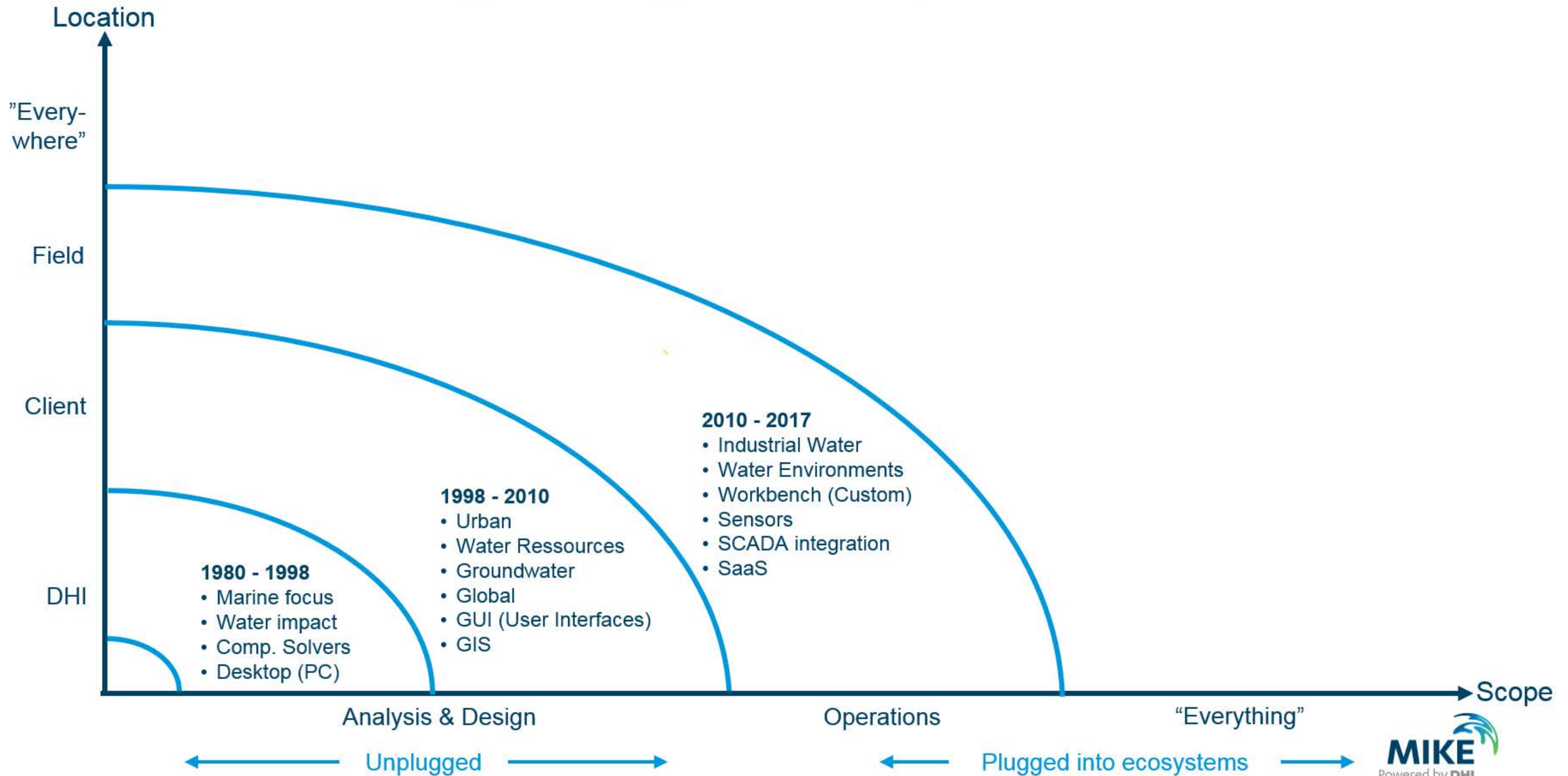
We are a private organisation

Our business systems ensure our efficiency

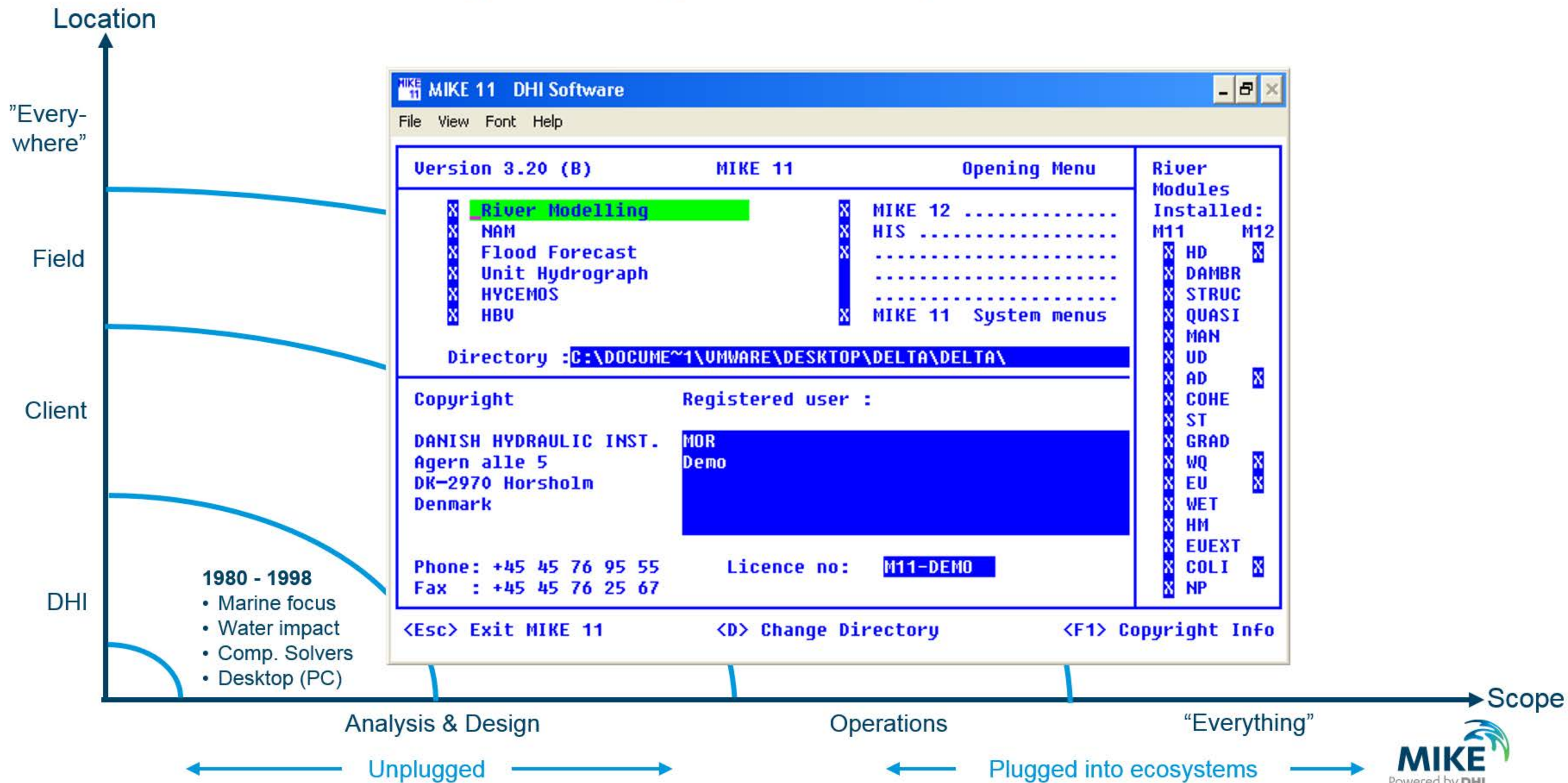
Embedding Our Knowledge in Technology



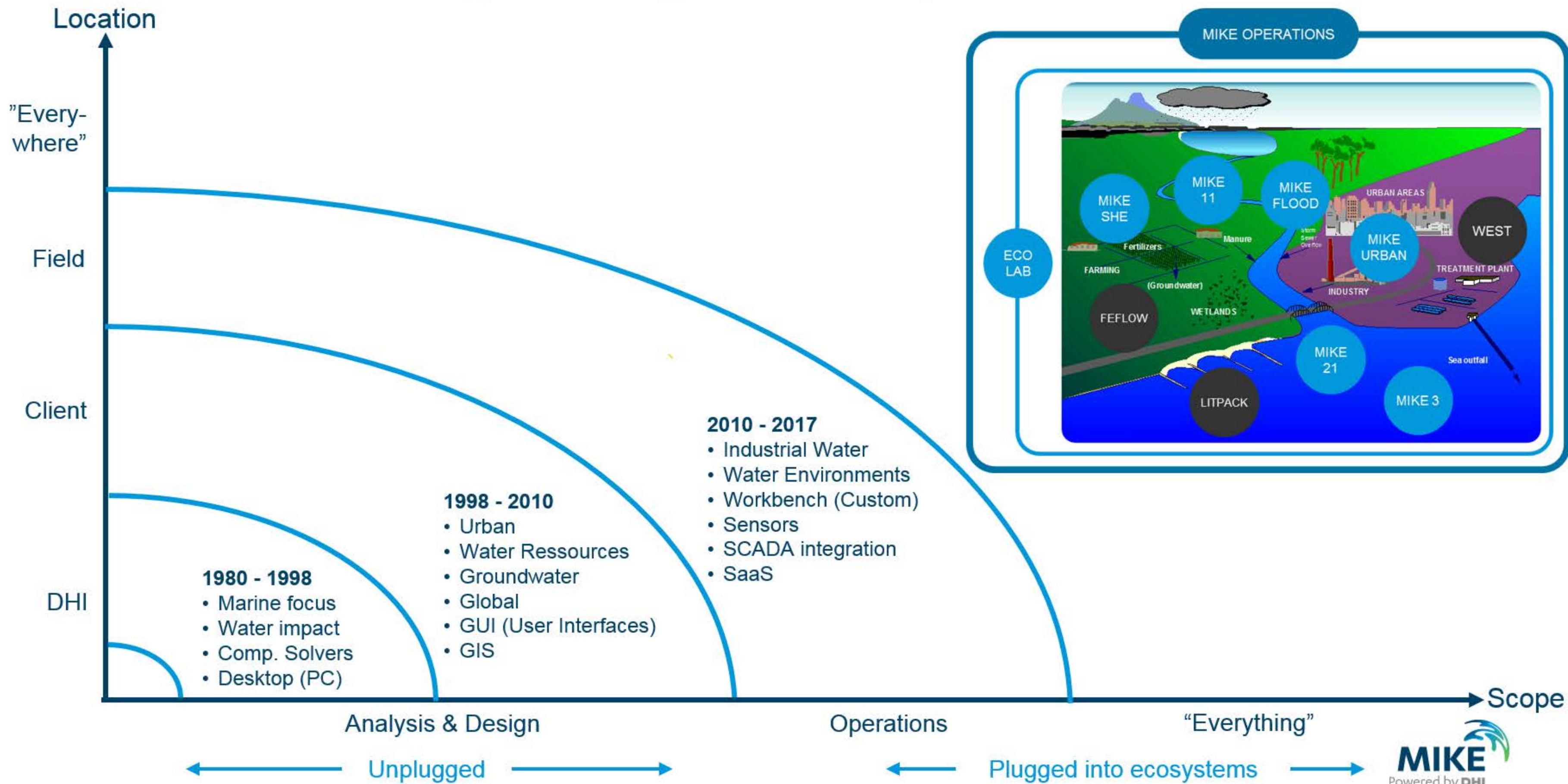
MIKE – From Engineering Tool to Operational Infrastructure



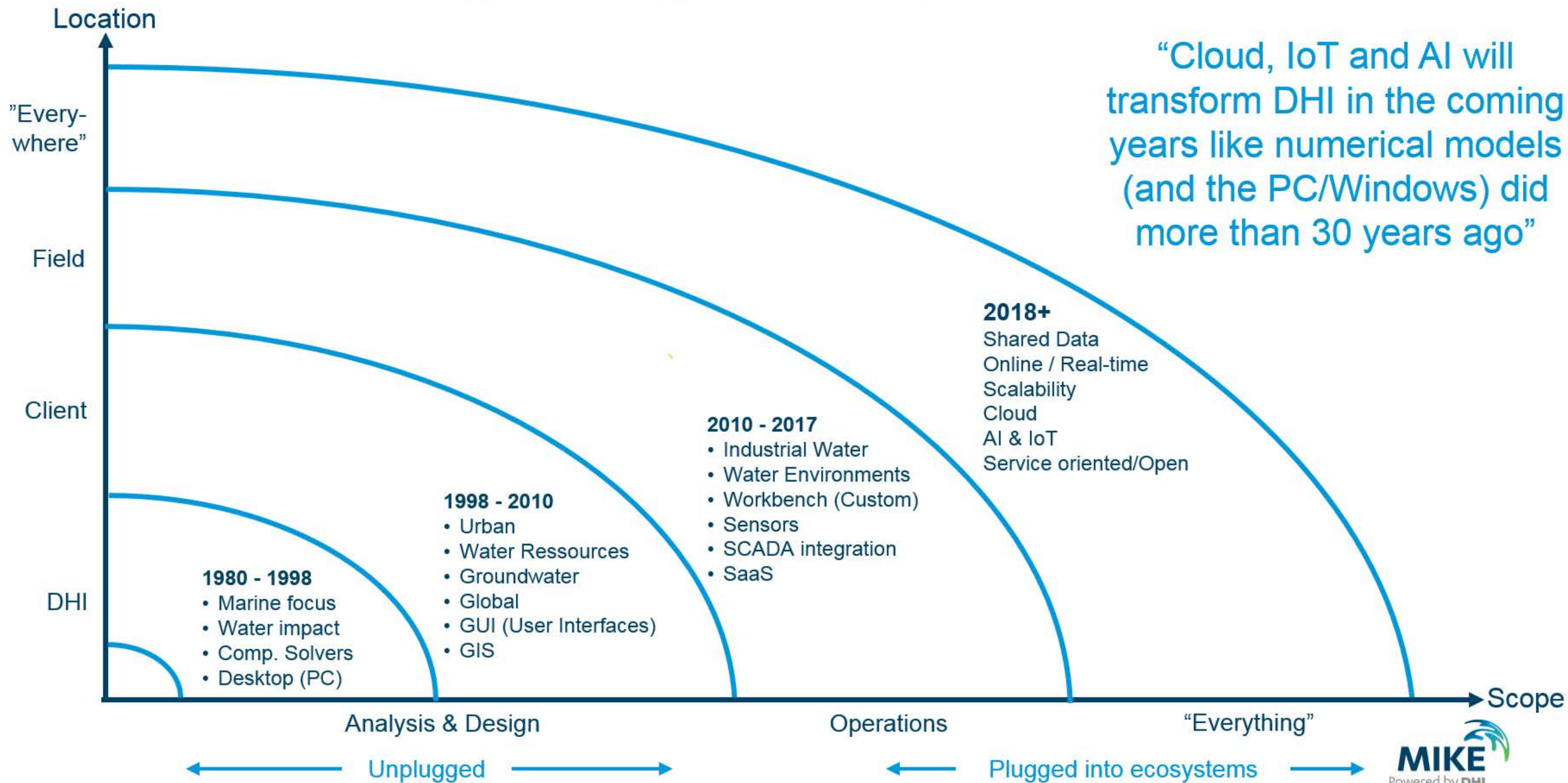
MIKE – From Engineering Tool to Operational Infrastructure



MIKE – From Engineering Tool to Operational Infrastructure



MIKE – From Engineering Tool to Operational Infrastructure



Transforming Data into Operational Decisions

HIGH

VALUE OF DATA

LOW

TIME

INCREASING LEVEL OF INFORMATION

DESCRIPTIVE

COLLECT

INTEGRATE

VALIDATE

ANALYZE

MODEL

REAL-TIME

FORECAST

OPTIMIZE

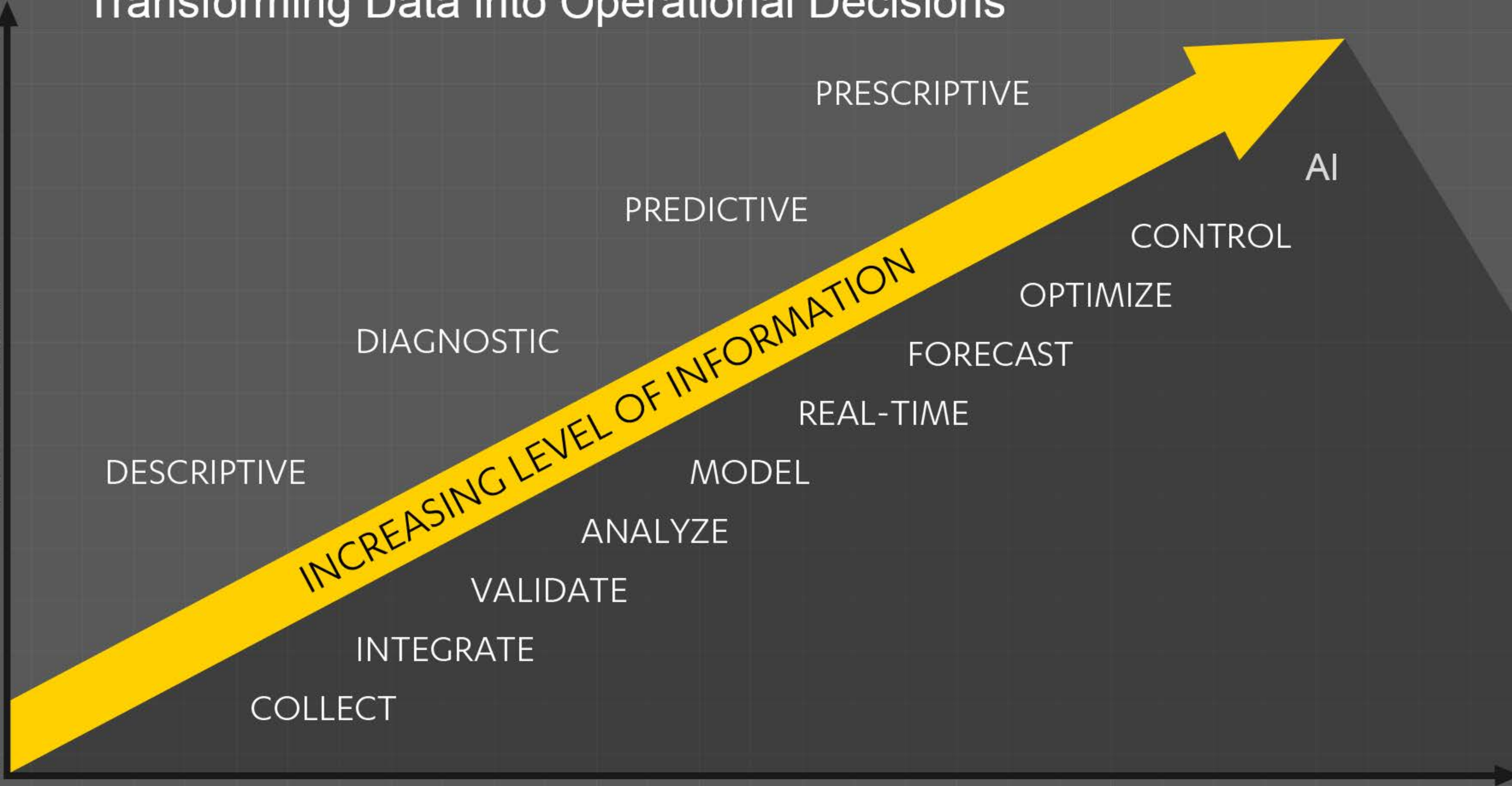
CONTROL

AI

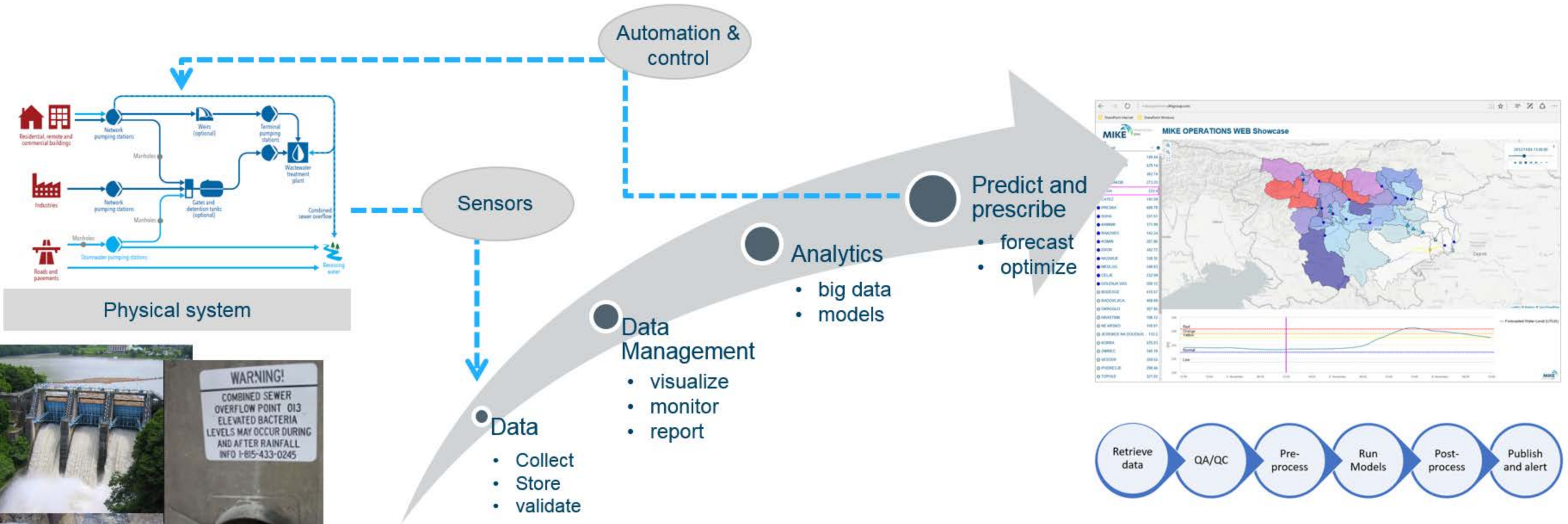
PRESCRIPTIVE

PREDICTIVE

DIAGNOSTIC



Transforming Data Into Operational Decisions



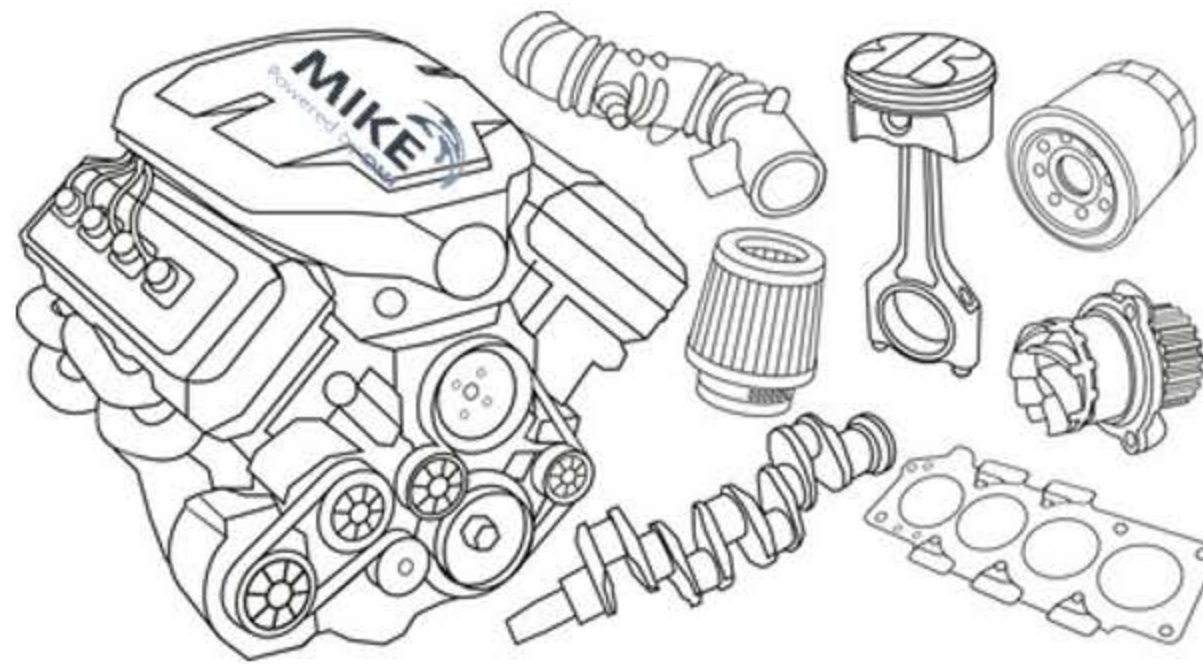
MIKE OPERATIONS

Empowering tools

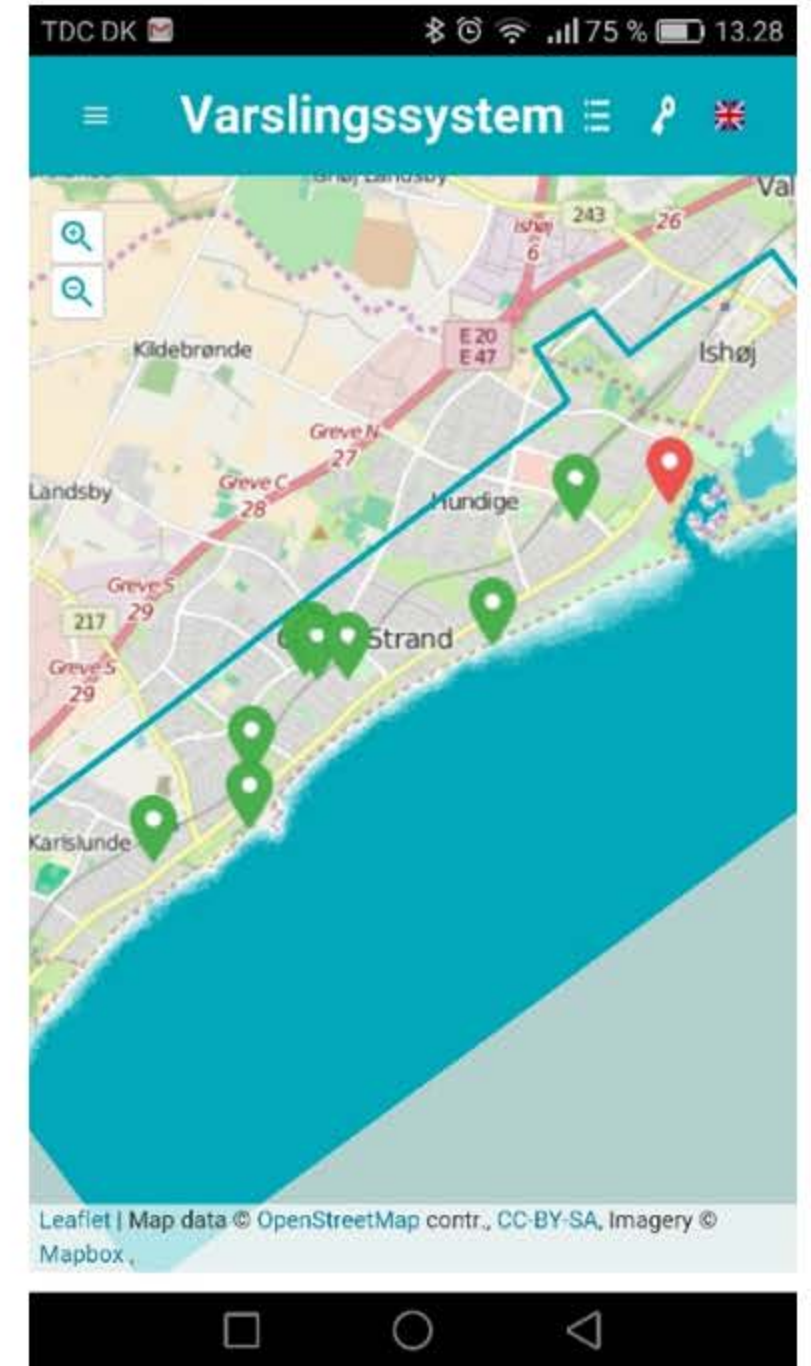
“Closer integration of data and models”



Input and output



Optimisation and customisation



Web components

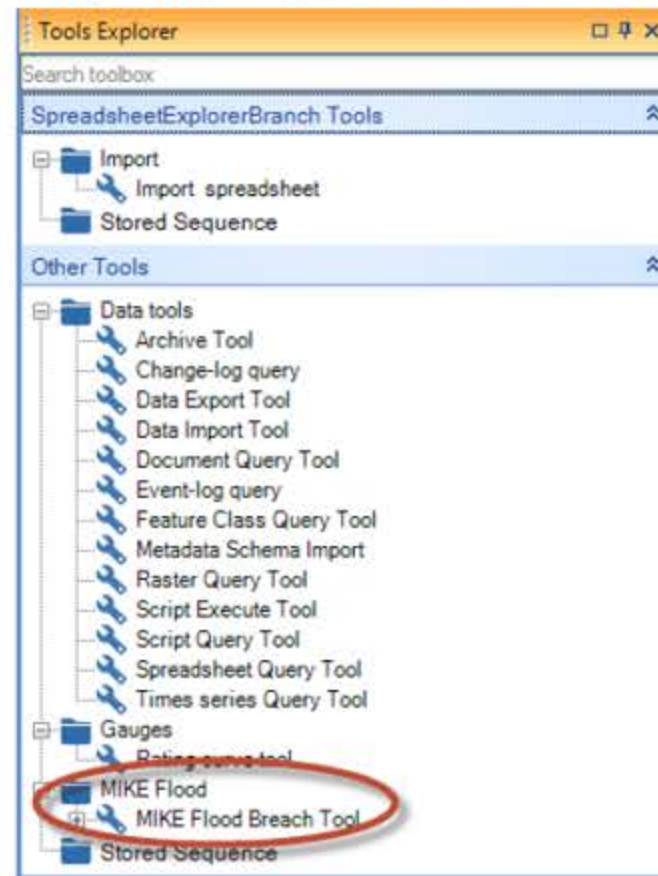
Empowering tools

“Close

The MIKE FLOOD – Breach Tool

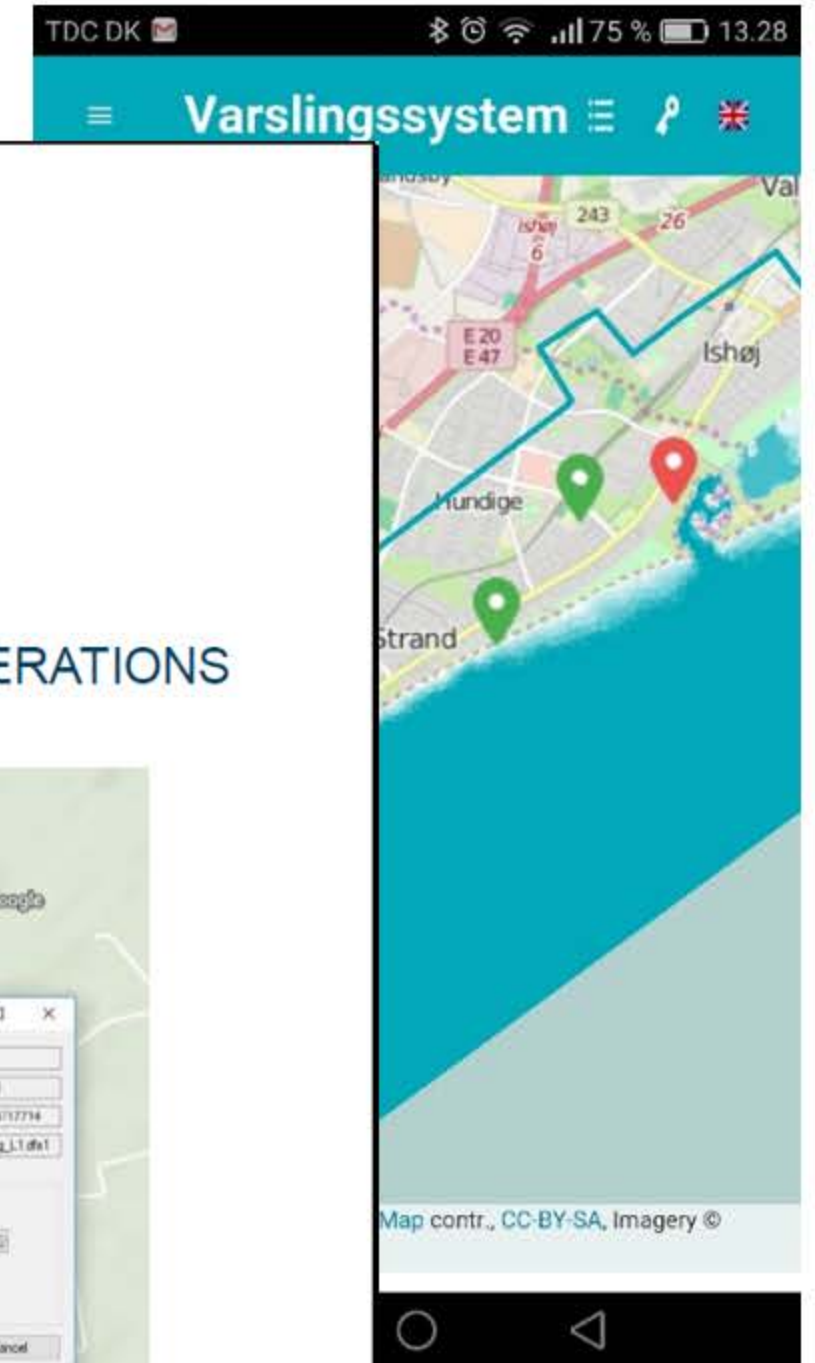
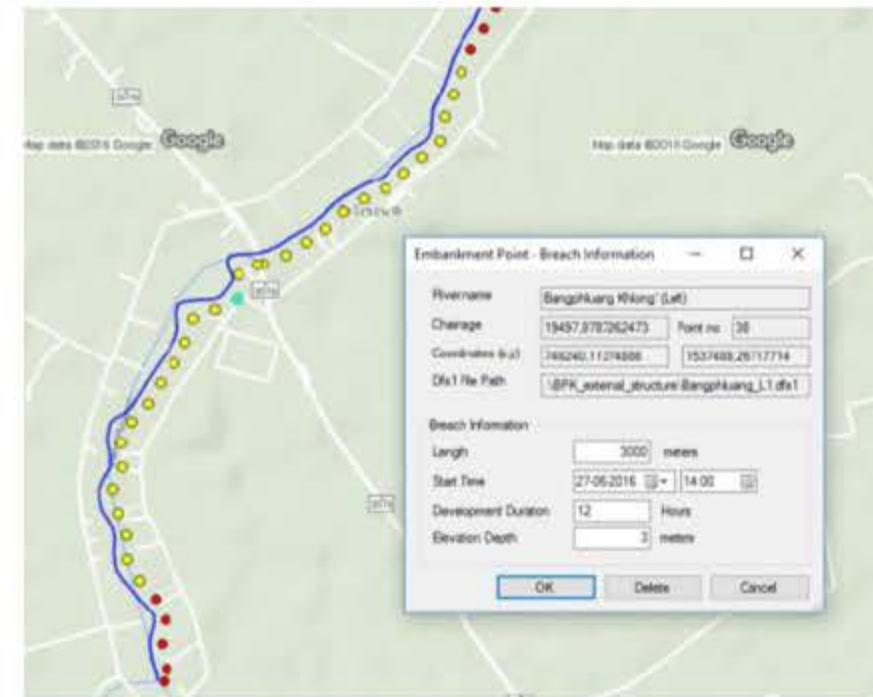
What is it?

The MIKE FLOOD Breach Tool, is a tool for simulating embankment breaches.



How is it implemented?

The breach tool is an add-on to MIKE OPERATIONS Workbench.



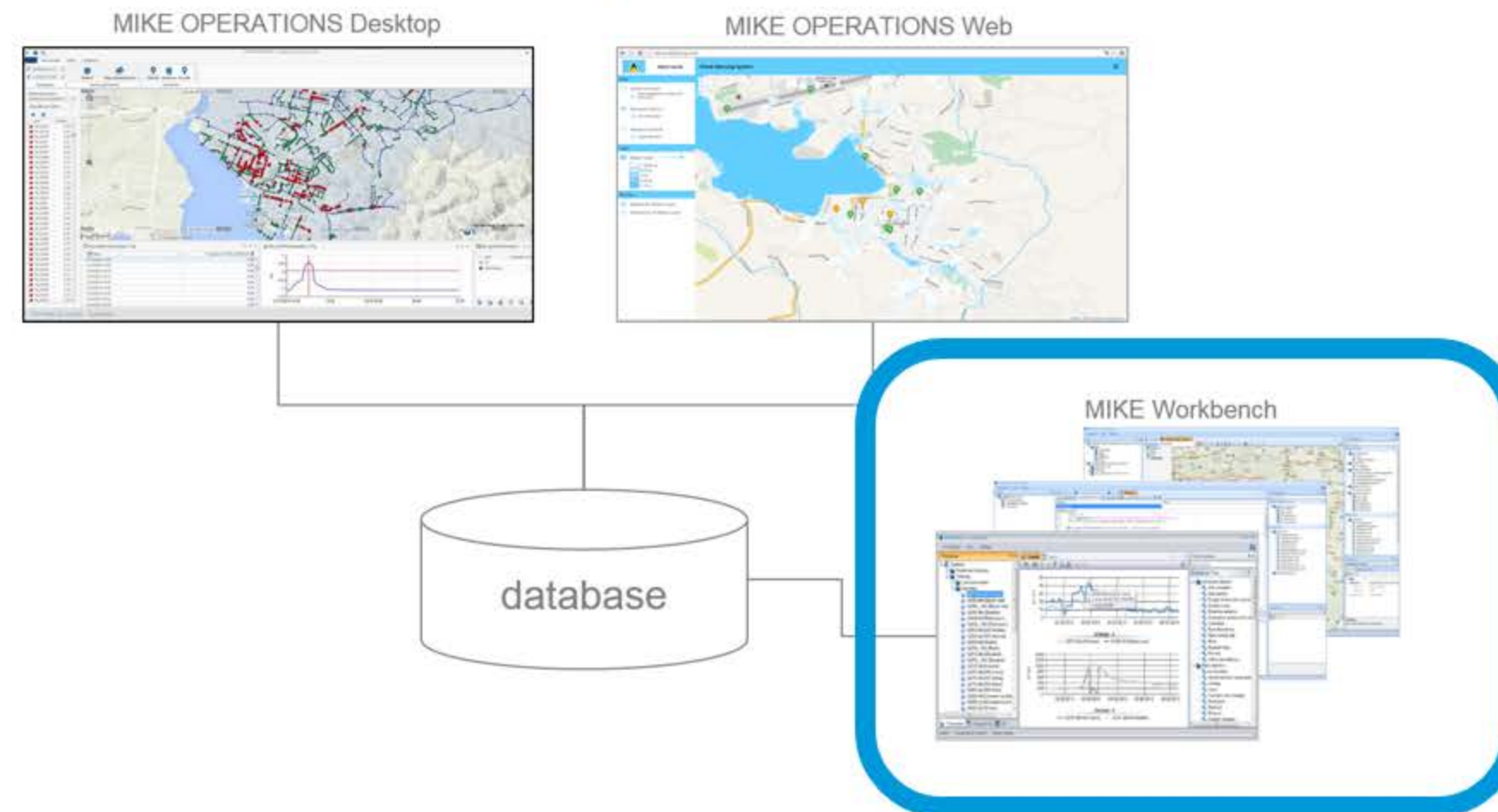
Components

Input and

MIKE OPERATIONS Modules from a user perspective

- **MIKE Workbench**

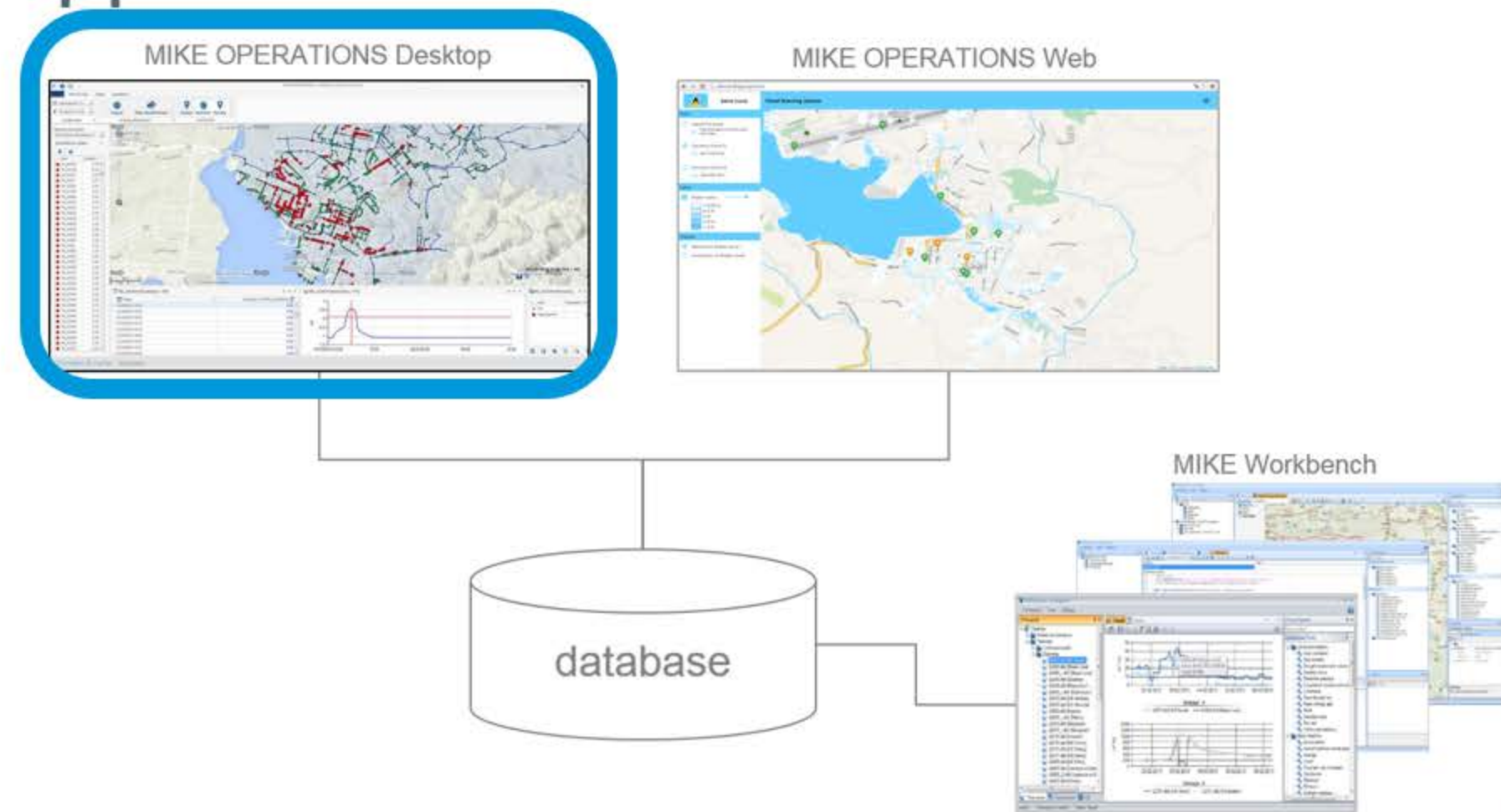
- advanced desktop client, designed for expert users who apply data analysis and process tools interactively and are able to configure automated workflows, scripts and custom-made data reports.



MIKE OPERATIONS Modules from a user perspective

- **MIKE OPERATIONS Desktop**

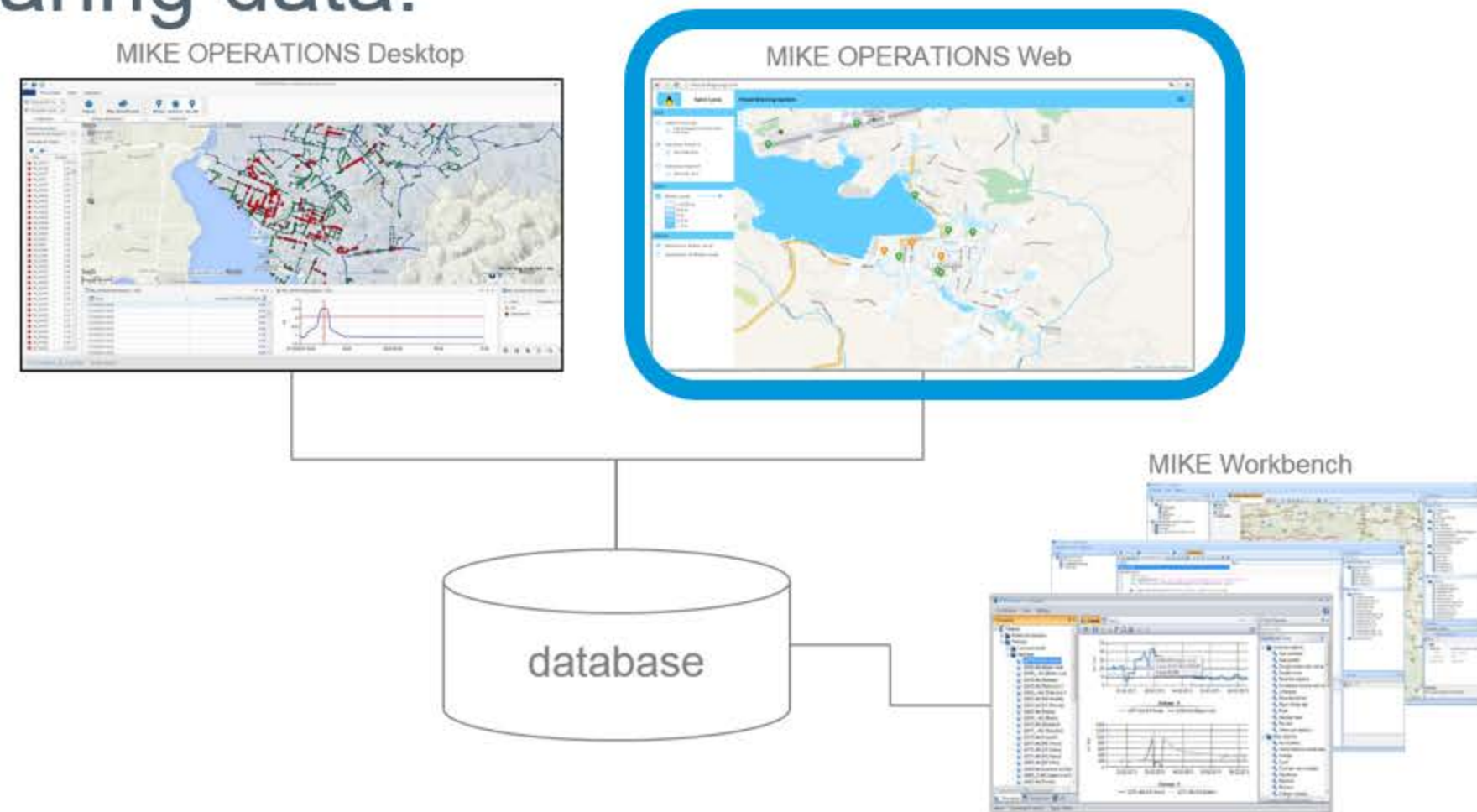
- user-friendly desktop client, designed for users who need fast and simple access to selected data sets in real-time and scenario execution for decision support.



MIKE OPERATIONS Modules from a user perspective

- **MIKE OPERATIONS Web**

- Out of the box web-client with a similar look-and-feel as MIKE OPERATIONS Desktop but with a subset of the functionality and a focus on viewing and sharing data.



About DHI

DHI are the first people you should call when you have a tough challenge to solve in a water environment.

In the world of water, our knowledge is second-to-none, and we strive to make it globally accessible to clients and partners.

So whether you need to save water, share it fairly, improve its quality, quantify its impact or manage its flow, we can help. Our knowledge, combined with our team's expertise and the power of our technology, hold the key to unlocking the right solution.

Thank you